

Synchron-Standard Typen 4-polig

29.09.2022

Leistung

Dauerbetriebsleistung bei normalem Spindelbetrieb und intensiver Wasserkühlung

Drehzahl in 1000 min ⁻¹	3	6	9	12	15	18	21	24	27	30	33	36	39	42	45
Frequenz in Hz	100	200	300	400	500	600	700	800	900	1000	1100	1200	1300	1400	1500
Typen (D1/LFe in cm)	Leistung in kW														
mSpW 5.5/4.5-4-s1r..	0.38	0.75	1.1	1.5	1.9	2.3	2.6	3	3.4	3.8	3.9	4.1	4.2	4.4	4.5
mSpW 5.5/6-4-s1r..	0.5	1	1.5	2	2.5	3	3.5	4	4.5	5	5.2	5.4	5.6	5.8	6
mSpW 5.5/8-4-s1r..	0.66	1.3	2	2.6	3.3	4	4.6	5.3	5.9	6.6	6.9	7.2	7.5	7.8	8.1
mSpW 6/4.5-4-s2r..	0.47	0.94	1.4	1.9	2.4	2.8	3.3	3.8	4.2	4.7	4.9	5.2	5.4	5.6	5.8
mSpW 6/6-4-s2r..	0.63	1.3	1.9	2.5	3.1	3.8	4.4	5	5.7	6.3	6.6	6.9	7.3	7.6	7.9
mSpW 6/8-4-s2r..	0.85	1.7	2.5	3.4	4.2	5.1	5.9	6.8	7.6	8.5	8.9	9.4	9.8	10.3	10.7
mSpW 7/4.5-4-s3r..	0.72	1.4	2.2	2.9	3.6	4.3	5	5.8	6.2	6.4	6.7	7	7.3	7.5	7.8
mSpW 7/6-4-s3r..	0.96	1.9	2.9	3.8	4.8	5.8	6.7	7.7	8.2	8.6	9	9.3	9.7	10.1	10.4
mSpW 7/8-4-s3r..	1.3	2.6	4	5.3	6.6	7.9	9.2	10.6	11.3	11.7	12.2	12.6	13.1	13.5	14
mSpW 7/11-4-s3r..	1.9	3.8	5.6	7.5	9.4	11.3	13.2	15.1	16.1	16.6	17.2	17.7	18.3	18.8	19.4
mSpW 8/4-4-s1r..	0.88	1.8	2.6	3.5	4.4	5.2	6.1	7	7.9	8.8	9.6	10.5	11.1	11.6	12.2
mSpW 8/6-4-s1r..	1.3	2.6	3.9	5.2	6.6	7.9	9.2	10.5	11.8	13.1	14.4	15.8	16.6	17.4	18.2
mSpW 8/8-4-s1r..	1.8	3.5	5.2	7	8.8	10.5	12.2	14	15.8	17.5	19.2	21	22	23	24
mSpW 8/11-4-s1r..	2.4	4.8	7.2	9.7	12.1	14.5	16.9	19.3	22	24	27	29	31	32	34
mSpW 8/15-4-s1r..	3.3	6.6	9.9	13.2	16.5	19.8	23	26	30	33	36	40	41	43	45
mSpW 9/6-4-s2r..	1.9	3.8	5.7	7.6	9.4	11.3	12.9	13.7	14.5	15.3	16.1	16.9	17.7	18.6	19.4
mSpW 9/8-4-s2r..	2.5	5	7.6	10.1	12.6	15.1	17.1	18.1	19.1	20	21	22	23	24	25
mSpW 9/11-4-s2r..	3.4	6.9	10.3	13.8	17.2	21	23	25	26	28	29	31	32	34	35
mSpW 9/15-4-s2r..	4.7	9.4	14.1	18.8	24	28	32	34	36	38	40	42	43	45	47
mSpW 10.6/6-4-s4r..	3.6	7.2	10.8	14.4	18	19.4	21	22	23	25	26	27	29		
mSpW 10.6/8-4-s4r..	5	10	15	20	25	27	29	31	33	35	37	39	41		
mSpW 10.6/11-4-s4r..	6.9	13.8	21	28	35	37	40	43	46	49	52				
mSpW 10.6/15-4-s4r..	9.4	18.8	28	38	47	51	55	59							
mSpW 12/4-4-s3r..	3	6	9	12	13.4	14.7	16.1	17.5	18.8						
mSpW 12/6-4-s3r..	4.4	8.8	13.2	17.6	19.8	22	24	26	29						
mSpW 12/8-4-s3r..	6	12	18	24	27	30	33	36	39						
mSpW 12/11-4-s3r..	8.5	17	25	34	38	43	47	51	56						
mSpW 12/15-4-s3r..	11.9	24	36	48	53	58	64	69	74						
mSpW 12/20-4-s3r..	16	32	48	64	71	78	85	92	99						
mSpW 13.5/5-4-s2r..	5	10.1	15.1	17.9	19.7	21	23	25	27	28					
mSpW 13.5/8-4-s2r..	8.1	16.3	24	29	32	35	38	41	44	47					
mSpW 13.5/9-4-s2r..	9.4	18.8	28	34	37	40	43	47	50	53					
mSpW 13.5/11-4-s2r..	11.6	23	35	42	46	51	55	60	65	69					
mSpW 13.5/12.5-4-s2r..	13.8	28	41	49	54	59	64	69	74	78					
mSpW 13.5/15-4-s2r..	16.6	33	50	60	66	72	79	85	91	97					
mSpW 13.5/20-4-s2r..	23	45	68	81	90	99	108	116	125						
mSpW 13.5/26-4-s2r..	29	58	87	105	117	129	141	153	165						
mSpW 15/8-4-s3r..	10.7	21	30	36	41	47	52	58	63	69					
mSpW 15/11-4-s3r..	15.1	30	42	48	54	61	67	73	79	85					
mSpW 15/14-4-s3r..	19.5	39	55	62	70	77	85	93	100	108					
mSpW 15/15-4-s3r..	21	42	59	67	75	83	92	100	108	116					
mSpW 15/20-4-s3r..	28	57	79	90	101	111	122	133	143						
mSpW 15/22-4-s3r..	31	63	88	99	111	122	134	146	157						
mSpW 15/26-4-s3r..	38	75	105	119	133	147	161	175	189						
mSpW 17/5-4-s1r..	8.3	16.6	21	24	27	30	32	35							
mSpW 17/5-4-s1r..	8.3	16.6	21	24	27	30	32	35							
mSpW 17/10-4-s1r..	15.7	31	41	47	54	60	67	73							
mSpW 17/10-4-s1r..	15.7	31	41	47	54	60	67	73							

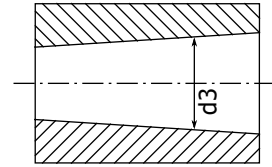
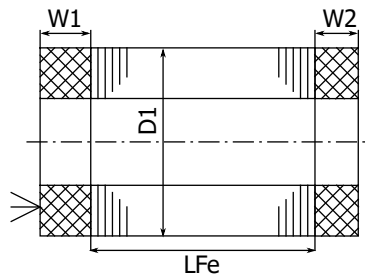


Drehzahl	in 1000 min ⁻¹	3	6	9	12	15	18	21	24	27	30	33	36	39	42	45
Frequenz	in Hz	100	200	300	400	500	600	700	800	900	1000	1100	1200	1300	1400	1500
Typen (D1/LFe in cm)		Leistung in kW														
mSpW 17/12-4-s1r..	18.8	38	49	57	65	72	80	88								
mSpW 17/12-4-s1r..	18.8	38	49	57	65	72	80	88								
mSpW 17/15-4-s1r..	25	50	65	75	86	96	106	116								
mSpW 17/15-4-s1r..	25	50	65	75	86	96	106	116								
mSpW 17/18-4-s1r..	30	59	81	97	114	131	148									
mSpW 17/18-4-s1r..	30	59	81	97	114	131	148									
mSpW 17/20-4-s1r..	33	66	89	107	124	141										
mSpW 17/20-4-s1r..	33	66	89	107	124	141										
mSpW 17/25-4-s1r..	42	85	114	138	161	184										
mSpW 17/25-4-s1r..	42	85	114	138	161	184										
mSpW 17/30-4-s1r..	50	100	131	152	174	195										
mSpW 17/30-4-s1r..	50	100	131	152	174	195										
mSpW 18/8-4-s1r..	15.7	31	37	43	49	54	60									
mSpW 18/11-4-s1r..	22	44	52	60	68	77	85									
mSpW 18/15-4-s1r..	30	60	72	85	98	110	123									
mSpW 18/20-4-s1r..	41	82	99	116	133	150										
mSpW 18/26-4-s1r..	54	107	129	151	173	194										
mSpW 20/8-4-s4r..	19.2	35	42	50	58	66										
mSpW 20/11-4-s4r..	27	48	59	70	81	92										
mSpW 20/15-4-s4r..	38	68	82	97	111	126										
mSpW 20/20-4-s4r..	50	91	110	130	150	170										
mSpW 20/22-4-s4r..	55	99	121	143	165	187										
mSpW 20/26-4-s4r..	66	119	146	172	199	226										



Massblatt

Skizze



Hauptabmessungen alle Masse in mm	Stator		Rotor		
	Aussendurchmesser D1	Wickelkopflänge		Bohrung d3	max. Drehzahl
Typ		W1 mit PTC	W2	im Nennpunkt	in 1000 min ⁻¹
D1/LFe in cm					
mSpW 17/ .. -4-s1r..	170	44	37	90	26
mSpW 7/ .. -4-s3r..	70.2	25	20	37	54
mSpW 13.5/ .. -4-s2r..	135	37	27	70	33
mSpW 15/ .. -4-s3r..	150	45	33	74	30
mSpW 20/ .. -4-s4r..	200	50	34	106	19
mSpW 18/ .. -4-s1r..	180	47	40	92	23
mSpW 12/ .. -4-s3r..	120	39	27	63	28
mSpW 10.6/ .. -4-s4r..	106.5	34	26	53	40
mSpW 5.5/ .. -4-s1r..	55	20	17	26	80
mSpW 6/ .. -4-s2r..	60.2	20	17	26	80
mSpW 9/ .. -4-s2r..	90	29	25	42	51
mSpW 8/ .. -4-s1r..	80	25	21	39	55
mSpW 17/ .. -4-s1r..	170	44	37	90	26