

Asynchron-Standard Typen 4-polig

20.12.2018

Leistung

Dauerbetriebsleistung in kW bei normalem Spindelbetrieb und intensiver Wasserkühlung.

Die Spitzenleistung ist erheblich höher

Rotor

Käfigwerkstoff: normal Aluminium oder Kupfer für ein grösseres Achsloch (bis ca. 100 m/s). Für höhere Umfangsgeschwindigkeiten ist eine spezielle Kupfer-Ausführung oder bei reduzierter Leistung eine Ausführung mit Aluminiumlegierung möglich.

Drehzahl	1000 * min ⁻¹	3	6	9	12	15	18	21	24	27	30	33	36	39	42	45
Frequenz	Hz	100	200	300	400	500	600	700	800	900	1000	1100	1200	1300	1400	1500
Typen (D1/Lfe cm)		Leistung in KW														
mW 6/2-4-s1r..				0.15	0.23	0.29	0.35	0.41	0.47	0.54	0.6	0.66	0.72	0.78	0.84	0.9
mW 6/3-4-s1r..			0.15	0.28	0.4	0.5	0.6	0.71	0.81	0.91	1	1.1	1.2	1.4	1.5	1.6
mW 6/4.5-4-s1r..		0.13	0.25	0.45	0.64	0.8	0.96	1.1	1.3	1.4	1.6	1.8	2	2.1	2.3	2.5
mW 6/6-4-s1r..		0.19	0.37	0.64	0.9	1.1	1.4	1.6	1.8	2	2.3	2.5	2.8	3	3.3	3.5
mW 6/8-4-s1r..		0.25	0.5	0.85	1.2	1.5	1.8	2.2	2.5	2.8	3.1	3.5	3.9	4.2	4.6	5
mW 6/3-4-s3r..			0.2	0.37	0.55	0.72	0.89	1.1	1.2	1.4	1.6	1.7	1.9	2	2.2	2.4
mW 6/4.5-4-s3r..		0.17	0.35	0.68	1	1.3	1.5	1.8	2	2.3	2.5	2.7	2.9	3.1	3.3	3.5
mW 6/6-4-s3r..		0.22	0.45	0.88	1.3	1.6	2	2.3	2.6	3	3.3	3.6	3.9	4.1	4.4	4.7
mW 6/8-4-s3r..		0.31	0.62	1.2	1.8	2.2	2.7	3.1	3.5	4	4.4	4.8	5.3	5.7	6.2	6.6
mW 6.5/8-4-s1r..		0.41	0.96	1.5	2	2.4	2.9	3.4	3.8	4.3	4.7	5.2	5.6	5.4	5.2	5
mW 7/3-4-s2r..		0.12	0.43	0.74	0.99	1.2	1.5	1.8	2	2.1	2.2	2.3	2.4	2.2	2.1	2
mW 7/4-4-s2r..		0.2	0.66	1.1	1.5	1.8	2.1	2.4	2.8	2.9	3.1	3.2	3.4	3.2	3	2.8
mW 7/5-4-s2r..		0.27	0.84	1.4	1.8	2.3	2.7	3.1	3.5	3.7	3.9	4.1	4.3	4.2	4	3.8
mW 7/6-4-s2r..		0.36	1	1.7	2.2	2.7	3.2	3.8	4.3	4.6	4.9	5.2	5.5	5.1	4.8	4.5
mW 7/7-4-s2r..		0.44	1.2	2	2.6	3.2	3.9	4.5	5.2	5.4	5.7	6	6.2	6	5.7	5.4
mW 7/10-4-s2r..		0.64	1.8	3	3.8	4.7	5.5	6.3	7.1	7.9	8.2	8.5	8.9	8.6	8.3	8
mW 7/12-4-s2r..		0.8	2.2	3.6	4.6	5.7	6.7	7.8	8.8	9.3	9.8	10.2	10.7	10.2	9.7	9.2
mW 8/4-4-s1r..		0.52	1	1.5	2	2.4	2.9	3.3	3.8	4.2	4.6	5	5.5			
mW 8/6-4-s1r..		0.77	1.5	2.3	3	3.6	4.3	4.9	5.5	6.2	6.9	7.6	8.3			
mW 8/9-4-s1r..		1.3	2.6	3.8	5	6.1	7.2	8.2	9.3	10.3	11.3	12.4	13.6			
mW 8/11-4-s1r..		1.6	3.1	4.6	6	7.3	8.5	9.8	11.1	12.3	13.5	14.8	16.2			
mW 8/15-4-s1r..		2	4.1	6.1	8	9.8	11.5	13.3	15.1	16.8	18.5	20	22			
mW 8/20-4-s1r..		2.8	5.6	8.2	10.9	13.2	15.6	18.1	21	23	25	28	30			
mW 8.3/2-4-s1r..		0.13	0.35	0.52	0.69	0.87	1	1.2	1.3	1.4	1.5	1.5	1.5	1.4		
mW 8.3/3-4-s1r..		0.2	0.58	0.88	1.2	1.5	1.8	1.9	2.1	2.3	2.5	2.5	2.5	2.3		
mW 8.3/4-4-s1r..		0.31	0.88	1.3	1.8	2.2	2.6	2.9	3.2	3.5	3.8	3.8	3.8	3.5		
mW 8.3/5-4-s1r..		0.46	1.1	1.6	2.2	2.8	3.3	3.7	4.1	4.5	4.9	4.9	4.9	4.4		
mW 8.3/6-4-s1r..		0.56	1.4	2.1	2.8	3.5	4.2	4.7	5.1	5.5	6	6	6	5.6		
mW 8.3/7-4-s1r..		0.69	1.7	2.5	3.3	4.1	4.9	5.4	5.9	6.5	7	7	7	6.3		
mW 8.3/9-4-s1r..		0.88	2.3	3.3	4.4	5.5	6.6	7.2	7.8	8.4	9	9	9	8.2		
mW 8.5/6-4-s1r..		0.5	1.2	2	2.8	3.5	4.1	4.8	5.5	6.2	6.9	6.9	6.4	6	5.5	
mW 8.5/8-4-s1r..		0.78	1.8	2.9	4	5	6	7.1	8.1	9.1	10.1	10	9.3	8.6	7.9	
mW 8.5/11-4-s1r..		1.2	2.4	4	5.5	6.9	8.3	9.7	11	12.4	13.8	13.8	12.9	11.9	11	
mW 8.5/12-4-s1r..		1.3	2.6	4.3	6	7.5	9.1	10.6	12.1	13.6	15.1	14.9	13.9	12.9	11.9	
mW 9/6-4-s1r..		1	2	3	4	5	6	7	8	9	9.6	10.1	10.1	10.1	10.1	10.1
mW 9/8-4-s1r..		1.4	2.7	4.1	5.4	6.8	8.1	9.5	10.8	12.2	12.7	13.2	13.2	13.2	13.2	13.1
mW 9/10-4-s1r..		1.7	3.4	5.1	6.8	8.5	10.2	11.9	13.6	15.3	16	16.7	16.7	16.7	16.6	16.6
mW 9/14-4-s1r..		2.6	5.1	7.7	10.2	12.8	14.9	17	19.2	21	22	23	23	23	23	23
mW 10.6/4-4-s1r..		0.6	1.6	2.3	3	3.8	4.5	5.2	6	5.4	4.9	4.3	3.5			
mW 10.6/6-4-s1r..		1.1	2.7	3.8	5	6.2	7.5	8.8	10	9.1	8.1	7.2	5.9			
mW 10.6/8-4-s1r..		1.6	3.8	5.4	7	8.6	10.2	11.9	13.5	12.2	10.8	9.5	7.4			
mW 10.6/10-4-s1r..		2.2	4.8	7.2	9.5	11.6	13.8	15.9	18	16.3	14.7	13	10			



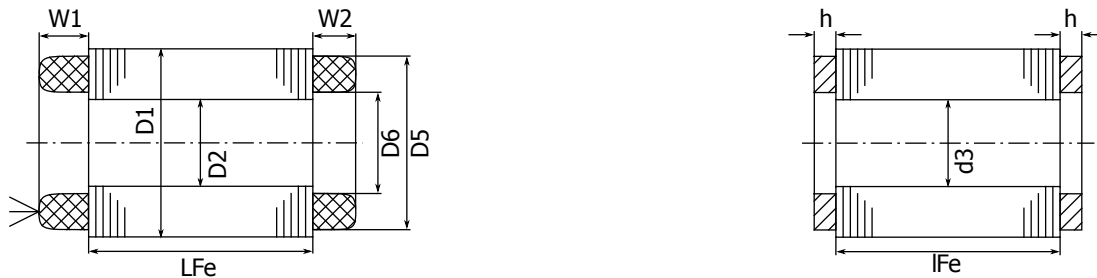
Drehzahl	1000 * min ⁻¹	3	6	9	12	15	18	21	24	27	30	33	36	39	42	45
Frequenz	Hz	100	200	300	400	500	600	700	800	900	1000	1100	1200	1300	1400	1500
Typen (D1/Lfe cm)		Leistung in KW														
mW 10.6/11-4-s1r..	2.7	5.3	7.9	10.5	12.9	15.2	17.6	20	18.3	16.7	15	11.3				
mW 10.6/12-4-s1r..	3	6	8.9	11.8	14.4	16.9	19.4	22	20	18	16	12.1				
mW 10.6/15-4-s1r..	3.8	7.5	11	14.4	17.7	21	24	28	24	22	18.5	14.1				
mW 11.4/5-4-s1r..	1.2	2.8	4.1	5.5	6.9	8.3	9.7	11.1	9.4							
mW 11.4/7-4-s1r..	1.9	4	6	8	10.1	12.1	13.8	15.6	13.5							
mW 11.4/9-4-s1r..	2.5	5.2	7.8	10.4	13	15.6	17.8	20	17.3							
mW 11.4/12-4-s1r..	3.5	7.2	10.7	14.3	17.6	21	24	26	23							
mW 11.4/15-4-s1r..	4.3	9	13.5	18	22	26	29	33	28							
mW 12/6-4-s1r..	2	4	6	8	9	10	8.8	7.5	6.8	6	3.5					
mW 12/9-4-s1r..	3	6	9.1	12.1	13.8	15.6	13.6	11.5	10.5	9.5	5.5					
mW 12/12-4-s1r..	4.5	9	13.6	18.1	20	22	19.6	17	15.5	14	7.8					
mW 13/5-4-s1r..	1.5	3	4.8	6.5	8.3	10	11.8	13.5	15.3	17						
mW 13/9-4-s1r..	3.5	7	10.7	14.3	17.9	22	25	29	32	36						
mW 13/10-4-s1r..	4	8.2	12.2	16.3	20	24	29	33	37	41						
mW 13/12.5-4-s1r..	5	10.1	15.1	20	25	30	35	40	45	50						
mW 13/15.5-4-s1r..	6.2	12.6	18.9	25	31	38	44	50	57	63						
mW 13/17.5-4-s1r..	7	14.3	21	29	36	43	50	57	64	72						
mW 13.5/5-4-s1r..	2	4	6.3	8.5	10.8	13	15.3	17.5	19.8	22						
mW 13.5/7-4-s1r..	3.3	6.5	10.1	13.6	17.2	21	24	28	31	35						
mW 13.5/9-4-s1r..	4.5	9	13.9	18.8	24	29	33	38	43	48						
mW 13.5/10-4-s1r..	5	11	16.4	22	27	32	38	43	49	54						
mW 13.5/11-4-s1r..	5.5	12	18	24	30	36	42	48	54	60						
mW 13.5/12.5-4-s1r..	6.5	14	21	27	34	40	47	54	60	67						
mW 13.5/15.5-4-s1r..	8	17	25	34	42	50	58	67	75	83						
mW 13.5/17.5-4-s1r..	9	19	28	38	47	56	66	75	85	94						
mW 14/10-4-s1r..	6.3	13.5	19.3	25	30	26	22	16.3								
mW 14/13-4-s1r..	8.5	17.9	26	33	40	35	30	21								
mW 15/5-4-s1r..	3.5	6.7	10	12.1	10.5	8.7	7									
mW 15/7-4-s1r..	5.5	9.8	14.1	18	14.9	12.4	8.8									
mW 15/9-4-s1r..	7	12.9	18.8	24	21	17.5	13.9									
mW 15/10-4-s1r..	8	15	22	27	24	19.8	15.6									
mW 15/12-4-s1r..	10	18.5	27	34	29	24	18.9									
mW 15/15-4-s1r..	12	22	33	42	36	30	23									
mW 15/22-4-s1r..	17.9	33	49	62	53	43	34									
mW 16/8-4-s1r..	7	14	21	26	30	25										
mW 16/11-4-s1r..	10	20	30	38	43	36										
mW 16/15-4-s1r..	14	28	42	53	60	50										
mW 16/20-4-s1r..	19	38	57	72	81	68										
mW 16/26-4-s1r..	25	50	75	95	105	88										
mW 17/5-4-s1r..	4.5	9.2	14	18	21	17.9										
mW 17/7-4-s1r..	7	13.9	21	27	31	27										
mW 17/10-4-s1r..	11	22	33	42	48	42										
mW 17/15-4-s1r..	17.3	34	50	62	72	62										
mW 17/18-4-s1r..	21	42	62	76	86	76										
mW 17/20-4-s1r..	24	46	68	85	95	85										
mW 17/22-4-s1r..	26	50	74	93	104	92										
mW 17/25-4-s1r..	30	58	85	105	120	105										
mW 17/30-4-s1r..	36	68	100	120	140	120										
mW 18/8-4-s1r..	9.1	18.2	26	34	28											
mW 18/11-4-s1r..	13.5	27	39	50	42											
mW 18/15-4-s1r..	19.2	38	53	68	57											
mW 18/19-4-s1r..	25	49	69	88	75											
mW 18/20-4-s1r..	26	52	73	93	78											
mW 18/26-4-s1r..	34	68	95	121	101											
mW 20/7-4-s1r..	11	22	33	33												
mW 20/11-4-s1r..	17.9	36	54	54												



Drehzahl	1000 * min ⁻¹	3	6	9	12	15	18	21	24	27	30	33	36	39	42	45
Frequenz	Hz	100	200	300	400	500	600	700	800	900	1000	1100	1200	1300	1400	1500
Typen (D1/Lfe cm)		Leistung in KW														
mW 20/13-4-s1r..	21	43	64	64												
mW 20/16-4-s1r..	28	55	83	83												
mW 20/18-4-s1r..	31	62	91	90												
mW 20/21-4-s1r..	36	72	105	105												
mW 20/26-4-s1r..	47	91	135	135												
mW 20/30-4-s1r..	55	105	155	155												
mW 20/36-4-s1r..	64	122	180	180												
mW 24/12-4-s1r..	28	54	74	58												
mW 24/15-4-s1r..	36	72	101	79												
mW 24/20-4-s1r..	50	96	136	108												
mW 24/25-4-s1r..	64	126	171	136												
mW 24/30-4-s1r..	77	151	205	163												

Massblatt

Skizze



Hauptabmessungen alle Masse in mm	Stator				Rotor						
	Durchmesser		Wickelkopf-Länge		Bohrung				Ring-Länge		
	D1	D2	W1	W2	d3 min		d3 max		h		
Typ	D1	D2	W1	W2	Al	Cu	Al	Cu	Al	Cu	Cu-St
D1/Lfe cm	mit PTC				Al	Cu	Al	Cu	Al	Cu	Cu-St
mW 6/ .. -4-s1r..	60.2	32	18	16	10.5	-	17.1	-	7	-	-
mW 6.5/ .. -4-s1r..	65	40	18	16	19.5	-	21	-	5.5	-	-
mW 7/ .. -4-s2r..	70.2	40	19	17	18.5	-	20	-	7.5	-	-
mW 8/ .. -4-s1r..	80	50	24	20	23.5	33	30	34	9	4	12
mW 8.3/ .. -4-s1r..	83	50	23	19	23.5	33	30	34	9	4	12
mW 8.5/ .. -4-s1r..	85.4	55	23	21	25	31	33	39	10	4	12
mW 10.6/ .. -4-s1r..	106.5	65	32	26	32.5	-	36	-	8	-	-
mW 11.4/ .. -4-s1r..	114.1	70	31	25	-	44.5	-	46	-	6	14
mW 12/ .. -4-s1r..	120	70	35	32	25.5	44.5	35	46	15	6	14
mW 13/ .. -4-s1r..	130	85	38	30	40	-	56	-	18.5	-	-
mW 13.5/ .. -4-s1r..	135	85	38	30	40	-	52	-	18.5	-	-
mW 14/ .. -4-s1r..	140	85	34	30	-	47	-	54	-	6	14
mW 15/ .. -4-s1r..	150	90	38	34	38	47	42	56	13	8	16
mW 16/ .. -4-s1r..	160	103	43	34	-	63.5	-	70	-	8	16
mW 17/ .. -4-s1r..	170	110	43	34	58.5	72.5	64	75	18	8	16
mW 18/ .. -4-s1r..	180	115	45	36	-	74	-	80	-	10	18
mW 20/ .. -4-s1r..	200	130	48	37	63.5	83.5	70	88	17	10	18
mW 24/ .. -4-s1r..	240	160	60	50	72	99	80	110	20	12	20