

Synchron-Standard types 4-pole

17/01/2024

Power

Continuous power for efficient water cooling

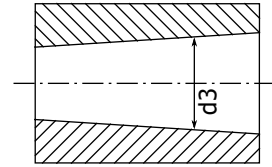
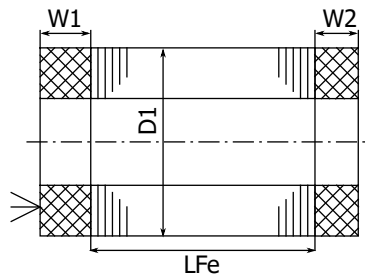
Speed	in krpm	3	6	9	12	15	18	21	24	27	30	33	36	39	42	45
Frequency	in Hz	100	200	300	400	500	600	700	800	900	1000	1100	1200	1300	1400	1500
Types (D1/LFe in cm)		Power in kW														
mSpW 5.5/4.5-4-s1r..		0.38	0.75	1.1	1.5	1.9	2.3	2.6	3	3.4	3.8	3.9	4.1	4.2	4.4	4.5
mSpW 5.5/6-4-s1r..		0.5	1	1.5	2	2.5	3	3.5	4	4.5	5	5.2	5.4	5.6	5.8	6
mSpW 5.5/8-4-s1r..		0.66	1.3	2	2.6	3.3	4	4.6	5.3	5.9	6.6	6.9	7.2	7.5	7.8	8.1
mSpW 6/4.5-4-s2r..		0.47	0.94	1.4	1.9	2.4	2.8	3.3	3.8	4.2	4.7	4.9	5.2	5.4	5.6	5.8
mSpW 6/6-4-s2r..		0.63	1.3	1.9	2.5	3.1	3.8	4.4	5	5.7	6.3	6.6	6.9	7.3	7.6	7.9
mSpW 6/8-4-s2r..		0.85	1.7	2.5	3.4	4.2	5.1	5.9	6.8	7.6	8.5	8.9	9.4	9.8	10.3	10.7
mSpW 7/4.5-4-s3r..		0.72	1.4	2.2	2.9	3.6	4.3	5	5.8	6.2	6.4	6.7	7	7.3	7.5	7.8
mSpW 7/6-4-s3r..		0.96	1.9	2.9	3.8	4.8	5.8	6.7	7.7	8.2	8.6	9	9.3	9.7	10.1	10.4
mSpW 7/8-4-s3r..		1.3	2.6	4	5.3	6.6	7.9	9.2	10.6	11.3	11.7	12.2	12.6	13.1	13.5	14
mSpW 7/11-4-s3r..		1.9	3.8	5.6	7.5	9.4	11.3	13.2	15.1	16.1	16.6	17.2	17.7	18.3	18.8	19.4
mSpW 8/4-4-s1r..		0.88	1.8	2.6	3.5	4.4	5.2	6.1	7	7.9	8.8	9.6	10.5	11.1	11.6	12.2
mSpW 8/6-4-s1r..		1.3	2.6	3.9	5.2	6.6	7.9	9.2	10.5	11.8	13.1	14.4	15.8	16.6	17.4	18.2
mSpW 8/8-4-s1r..		1.8	3.5	5.2	7	8.8	10.5	12.2	14	15.8	17.5	19.2	21	22	23	24
mSpW 8/11-4-s1r..		2.4	4.8	7.2	9.7	12.1	14.5	16.9	19.3	22	24	27	29	31	32	34
mSpW 8/15-4-s1r..		3.3	6.6	9.9	13.2	16.5	19.8	23	26	30	33	36	40	41	43	45
mSpW 9/6-4-s2r..		1.9	3.8	5.7	7.6	9.4	11.3	12.9	13.7	14.5	15.3	16.1	16.9	17.7	18.6	19.4
mSpW 9/8-4-s2r..		2.5	5	7.6	10.1	12.6	15.1	17.1	18.1	19.1	20	21	22	23	24	25
mSpW 9/11-4-s2r..		3.4	6.9	10.3	13.8	17.2	21	23	25	26	28	29	31	32	34	35
mSpW 9/15-4-s2r..		4.7	9.4	14.1	18.8	24	28	32	34	36	38	40	42	43	45	47
mSpW 10.6/6-4-s3r..		3.6	7.2	10.8	14.4	18	19.4	21	22	23	25	26	27	29		
mSpW 10.6/8-4-s3r..		5	10	15	20	25	27	29	31	33	35	37	39	41		
mSpW 10.6/11-4-s3r..		6.9	13.8	21	28	35	37	40	43	46	49	52				
mSpW 10.6/15-4-s3r..		9.4	18.8	28	38	47	51	55	59							
mSpW 12/4-4-s3r..		3	6	9	12	13.4	14.7	16.1	17.5	18.8						
mSpW 12/6-4-s3r..		4.4	8.8	13.2	17.6	19.8	22	24	26	29						
mSpW 12/8-4-s3r..		6	12	18	24	27	30	33	36	39						
mSpW 12/11-4-s3r..		8.5	17	25	34	38	43	47	51	56						
mSpW 12/15-4-s3r..		11.9	24	36	48	53	58	64	69	74						
mSpW 12/20-4-s3r..		16	32	48	64	71	78	85	92	99						
mSpW 13.5/5-4-s2r..		5	10.1	15.1	17.9	19.7	21	23	25	27	28					
mSpW 13.5/8-4-s2r..		8.1	16.3	24	29	32	35	38	41	44	47					
mSpW 13.5/9-4-s2r..		9.4	18.8	28	34	37	40	43	47	50	53					
mSpW 13.5/11-4-s2r..		11.6	23	35	42	46	51	55	60	65	69					
mSpW 13.5/12.5-4-s2r..		13.8	28	41	49	54	59	64	69	74	78					
mSpW 13.5/15-4-s2r..		16.6	33	50	60	66	72	79	85	91	97					
mSpW 13.5/20-4-s2r..		23	45	68	81	90	99	108	116	125						
mSpW 13.5/26-4-s2r..		29	58	87	105	117	129	141	153	165						
mSpW 15/8-4-s3r..		10.7	21	30	36	41	47	52	58	63	69					
mSpW 15/11-4-s3r..		15.1	30	42	48	54	61	67	73	79	85					
mSpW 15/14-4-s3r..		19.5	39	55	62	70	77	85	93	100	108					
mSpW 15/15-4-s3r..		21	42	59	67	75	83	92	100	108	116					
mSpW 15/20-4-s3r..		28	57	79	90	101	111	122	133	143						
mSpW 15/22-4-s3r..		31	63	88	99	111	122	134	146	157						
mSpW 15/26-4-s3r..		38	75	105	119	133	147	161	175	189						
mSpW 17/5-4-s1r..		8.3	16.6	21	24	27	30	32	35							
mSpW 17/5-4-s1r..		8.3	16.6	21	24	27	30	32	35							
mSpW 17/10-4-s1r..		15.7	31	41	47	54	60	67	73							
mSpW 17/10-4-s1r..		15.7	31	41	47	54	60	67	73							



Speed	in krpm	3	6	9	12	15	18	21	24	27	30	33	36	39	42	45
Frequency	in Hz	100	200	300	400	500	600	700	800	900	1000	1100	1200	1300	1400	1500
Types (D1/LFe in cm)		Power in kW														
mSpW 17/12-4-s1r..	18.8	38	49	57	65	72	80	88								
mSpW 17/12-4-s1r..	18.8	38	49	57	65	72	80	88								
mSpW 17/15-4-s1r..	25	50	65	75	86	96	106	116								
mSpW 17/15-4-s1r..	25	50	65	75	86	96	106	116								
mSpW 17/18-4-s1r..	30	59	81	97	114	131	148									
mSpW 17/18-4-s1r..	30	59	81	97	114	131	148									
mSpW 17/20-4-s1r..	33	66	89	107	124	141										
mSpW 17/20-4-s1r..	33	66	89	107	124	141										
mSpW 17/25-4-s1r..	42	85	114	138	161	184										
mSpW 17/25-4-s1r..	42	85	114	138	161	184										
mSpW 17/30-4-s1r..	50	100	131	152	174	195										
mSpW 17/30-4-s1r..	50	100	131	152	174	195										
mSpW 18/8-4-s1r..	15.7	31	37	43	49	54	60									
mSpW 18/11-4-s1r..	22	44	52	60	68	77	85									
mSpW 18/15-4-s1r..	30	60	72	85	98	110	123									
mSpW 18/20-4-s1r..	41	82	99	116	133	150										
mSpW 18/26-4-s1r..	54	107	129	151	173	194										
mSpW 20/8-4-s4r..	19.2	35	42	50	58	66										
mSpW 20/11-4-s4r..	27	48	59	70	81	92										
mSpW 20/15-4-s4r..	38	68	82	97	111	126										
mSpW 20/20-4-s4r..	50	91	110	130	150	170										
mSpW 20/22-4-s4r..	55	99	121	143	165	187										
mSpW 20/26-4-s4r..	66	119	146	172	199	226										

Dimension sheet

Sketch



Main dimensions all dimensions in mm	Stator			Rotor	
	Outer diameter D1	Length of winding head		Bore d3	max. speed
Typ		W1	W2		
D1/LFe in cm		with PTC		at nominal point	in krpm
mSpW 5.5/ .. -4-s1r..	55	20	17	26	80
mSpW 6/ .. -4-s2r..	60.2	20	17	26	80
mSpW 7/ .. -4-s3r..	70.2	25	20	37	54
mSpW 8/ .. -4-s1r..	80	25	21	39	55
mSpW 9/ .. -4-s2r..	90	29	25	42	51
mSpW 10.6/ .. -4-s3r..	106.5	34	26	53	40
mSpW 12/ .. -4-s3r..	120	39	27	63	28
mSpW 13.5/ .. -4-s2r..	135	37	27	70	33
mSpW 15/ .. -4-s3r..	150	45	33	74	30
mSpW 17/ .. -4-s1r..	170	44	37	90	26
mSpW 17/ .. -4-s1r..	170	44	37	90	26
mSpW 18/ .. -4-s1r..	180	47	40	92	23
mSpW 20/ .. -4-s4r..	200	50	34	106	19