

Synchron-Standard types 2-pole

01/12/2021

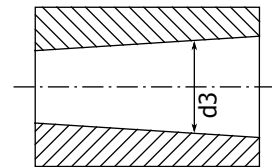
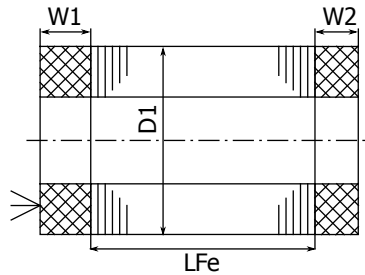
Power

Continuous power for efficient water cooling

Speed	in krpm	6	12	18	24	30	36	42	48	54	60	66	72	78	84	90	
Frequency	in Hz	100	200	300	400	500	600	700	800	900	1000	1100	1200	1300	1400	1500	
Types (D1/LFe in cm)		Power in kW															
mSpW 1.3/3.6-2-s1r..															0.11	0.11	0.12
mSpW 1.7/3.3-2-s1r..								0.11	0.12	0.14	0.15	0.17	0.18	0.2	0.21	0.23	
mSpW 1.9/3.3-2-s1r..					0.1	0.13	0.15	0.18	0.2	0.23	0.25	0.28	0.3	0.33	0.35	0.38	
mSpW 2.1/3.3-2-s1r..					0.13	0.17	0.2	0.23	0.27	0.3	0.33	0.37	0.4	0.43	0.47	0.5	

Dimension sheet

Sketch



Main dimensions all dimensions in mm	Stator			Rotor	
	Outer diameter D1	Length of winding head W1 W2		Bore d3	max. speed
Typ D1/LFe in cm		with PTC		at nominal point	in krpm
mSpW 1.3/ .. -2-s1r..	13.1	4	1.5	0	150
mSpW 1.7/ .. -2-s1r..	17.2	3	1	0	120
mSpW 1.9/ .. -2-s1r..	19	3	2	0	100
mSpW 2.1/ .. -2-s1r..	21.33	6	4	6	100